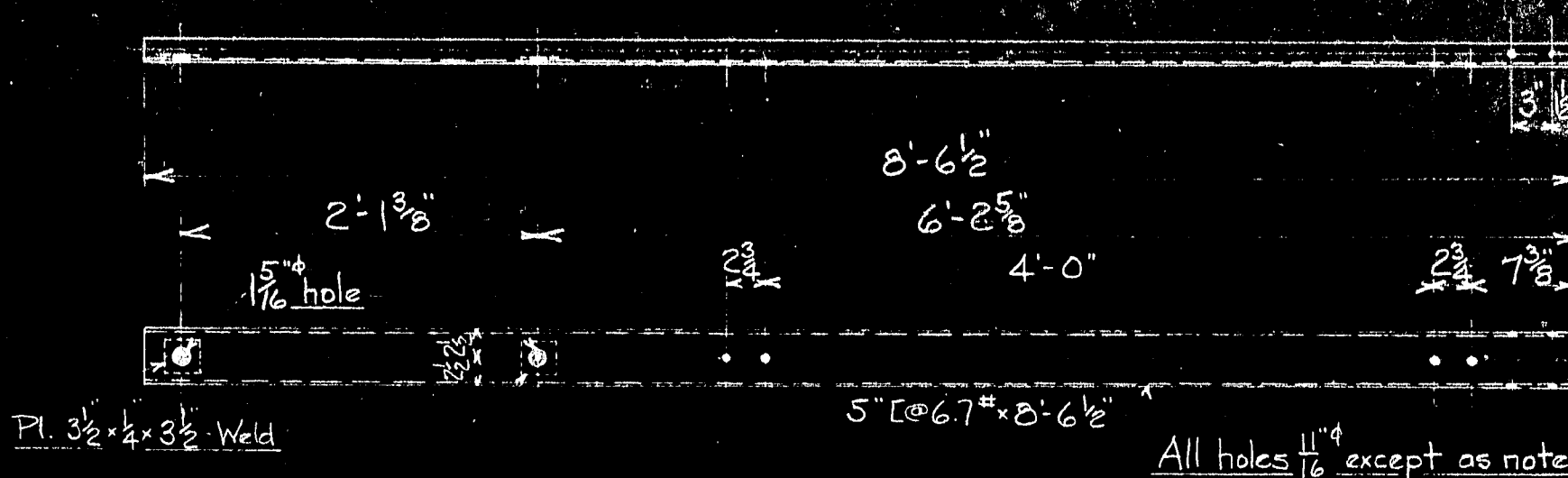
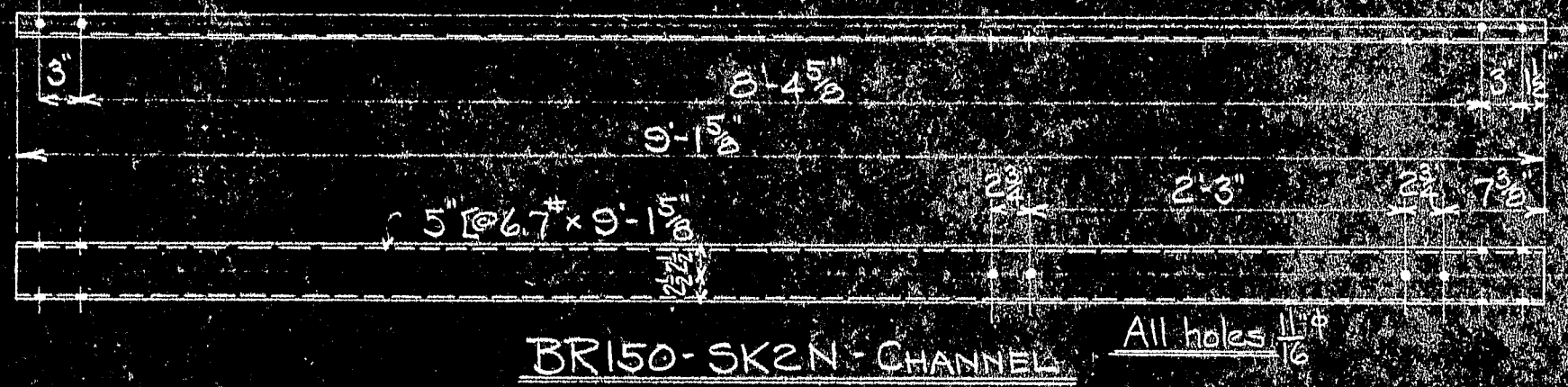
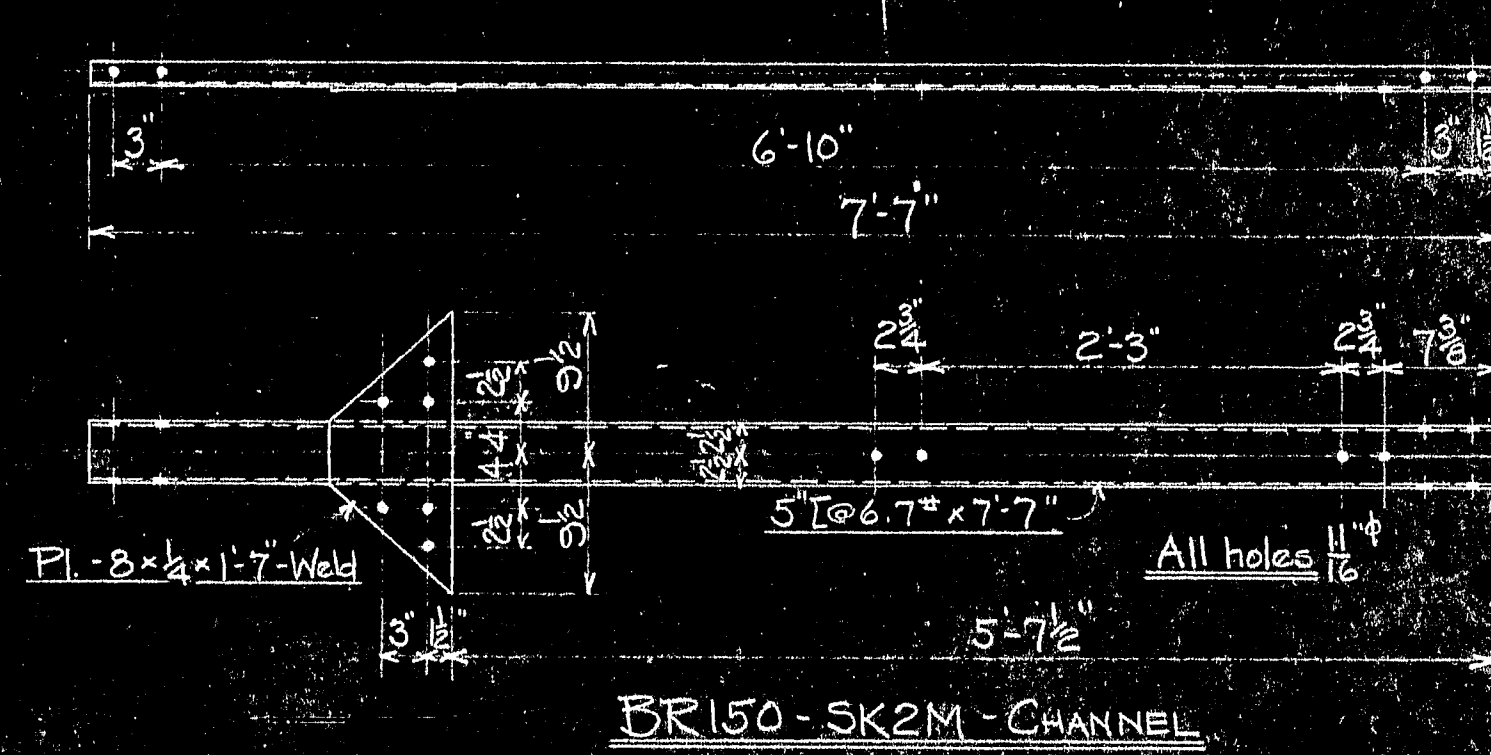
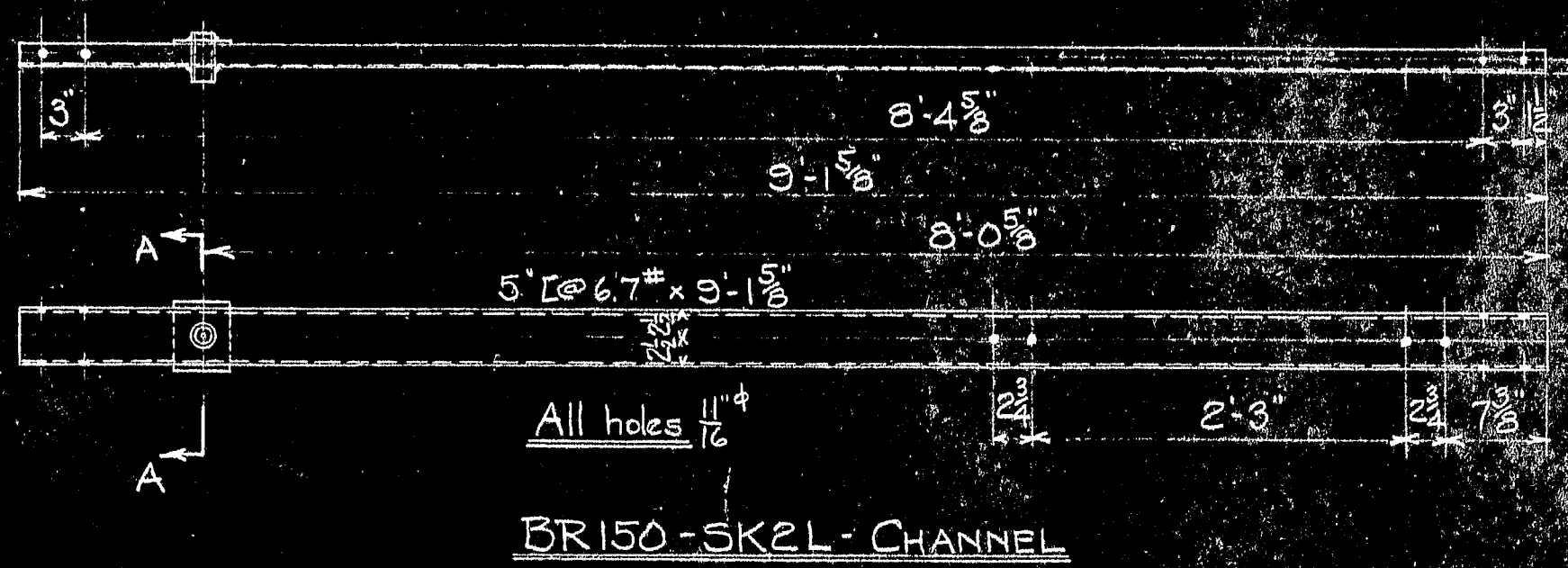
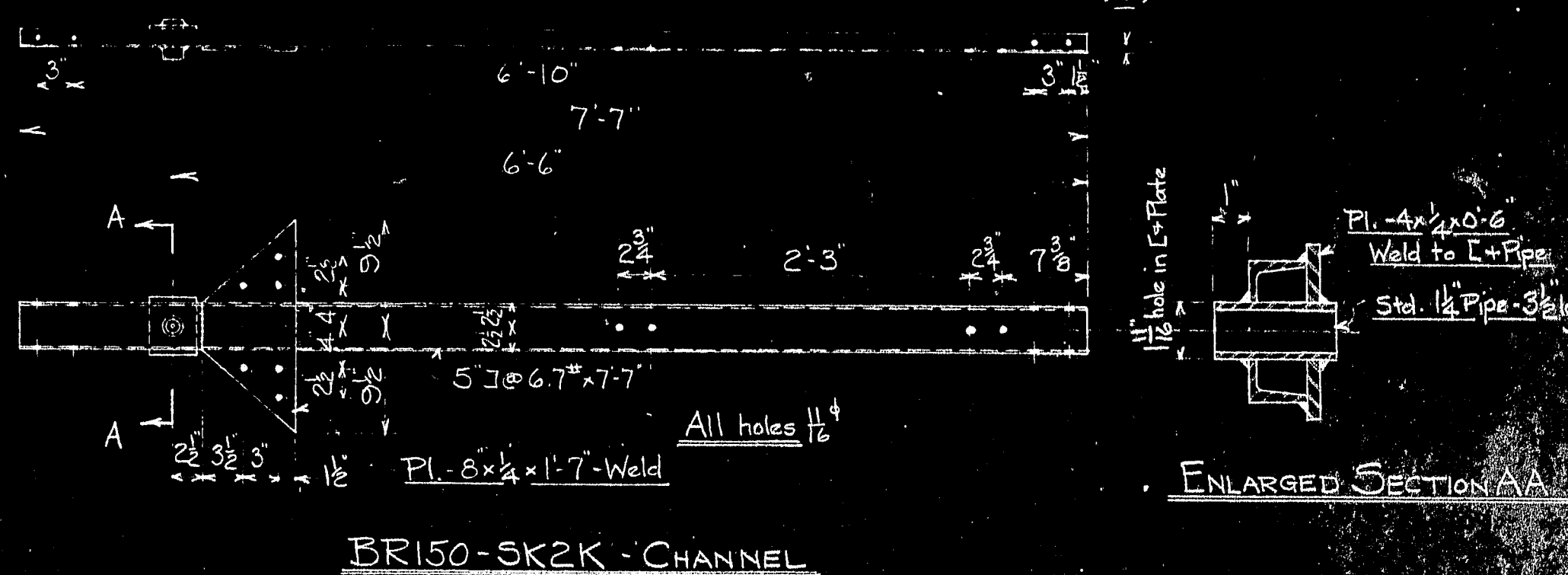
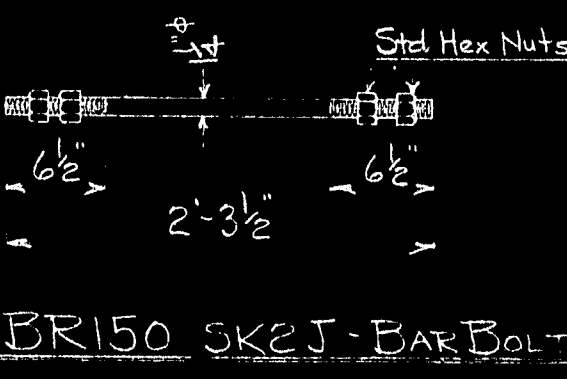


4 for Wind Road Wheel on hand in Dept. 80.



BR150-SK2A	320			5/8 Round Washers	
BR150-SK2B	88			2" Mach Bolt - 4 1/2" x 1/2" Nut	
BR150-SK2C	144			2" Mach Bolt - 3 1/2" x 1/2" Nut	
BR150-SK2D	16			2" Mach Bolt - 2 1/2" x 1/2" Nut	
BR150-SK2E	96			2" Mach Bolt - 1 1/2" x 1/2" Nut	
BR150-SK2F	8			1 1/2" Bolt - 2 1/2" x 1/2" Nut	
BR150-SK2G	8			Channel	
BR150-SK2H	4			"	
BR150-SK2I	4			"	
BR150-SK2J	4			Channel	
BR150-SK2K	4			Bar Bolt	
BR150-SK2L	4			Wheel (After wheel on hand 180)	
BR150-SK2M	8			Angle	
BR150-SK2N	4			Angle	
BR150-SK2O	4			Channel	
BR150-SK2P	2			"	
BR150-SK2Q	2			"	
BR150-SK2R	2			Channel	

MARK	REQ'D	MAT'L	REQ. NO.	NAME	REMARKS
BILL OF MATERIAL					
JOHN A. ROEBLING'S SONS CO., TRENTON, N. J.					
DEER ISLE BRIDGE REINFORCEMENT					
WORK CAR DETAILS					
BY	REVISIONS	DATE			
APPROVED					
CH. DR.	SCALE 1" = 1'-0"	SERIAL	SHEET		
ENG'R	DES. DR. 2407-16-43	CH	BR150 SK2		
DWG. NO. Work Car Assembly		REFERENCE DRAWINGS			

